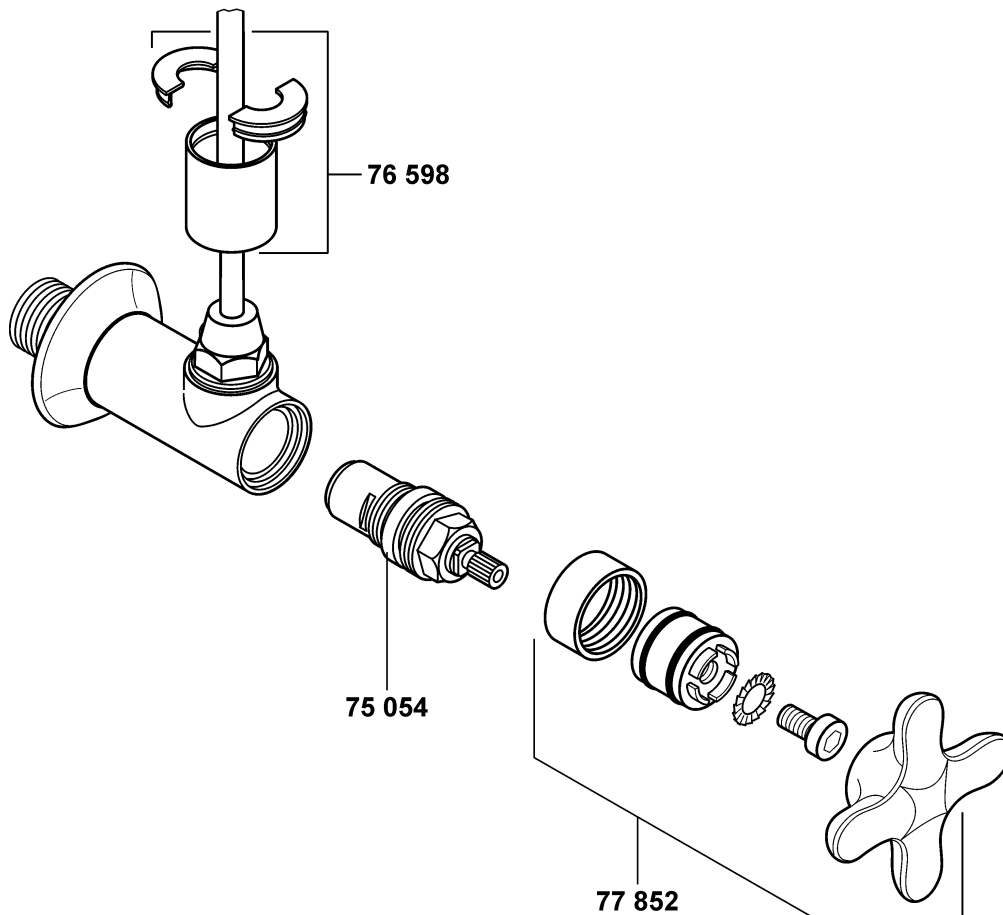


**54843**


A\_5484320

54843	Eckventil DN 15	angle valve DN 15	hoekstopkraan 1/2"
75 054	Keramik-Oberteil G 1/2, 90°	ceramic headpart G 1/2, 90°	keramisch bovendeel G 1/2, 90°
76 598	Abdeckkappe	cover cap	afdekkap
77 852	Hebel vormontiert	lever preassembled	hendel voormonteerd